



## AMATI COLOR ISLAND

SKU:946-60

With a contemporary industrial feel and Amati steel accents and supports, the stunning Amati Color Island is the perfect addition to your salon.

This space saving design features a wide variety of storage options and a built-in sink. This eye catching island is certain to set you apart from the rest.



### TECHNICAL INFORMATION

---

- Measures: 60"W x 30"D x 36"H x 80"H
- Centered stainless steel sink
- Color cubbies
- Upper storage cabinet
- 2 Drawers
- Lower storage cabinets w/ adjustable shelves
- Inquire with factory about different size Color Islands, or different features

### SHIPPING INFORMATION

---

Item generally ships via Freight(Truck) service

- Weight: 700 lbs
- Dimensions: 2 skids

### WARRANTY

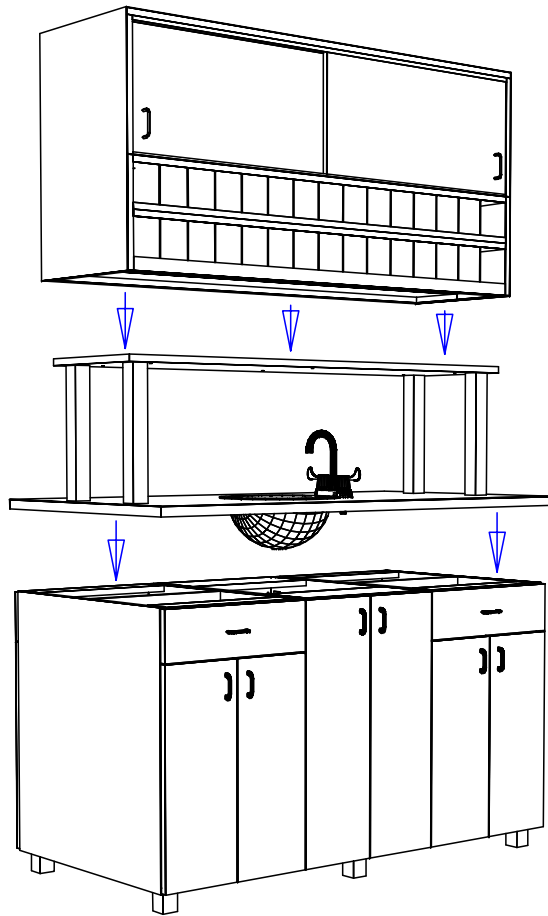
---

#### 3 Years:

- Ball-Bearing Drawer Slides
- Cabinet hinges

#### 1 Year:

- All remaining components, unless noted otherwise, are guaranteed for a period of one year from the date of purchase.



The 946-60 color bar ships in 5 pieces (3 base cabinets, 1 riser/counter assembly and 1 upper cabinet.)

- 1) Connect base cabinets using the provided connector bolts through pre drilled holes.
- 2) Lower the riser assembly onto the base cabinet assembly and use provided wood screws to fasten through cleats in base cabinets.
- 3) With at least 4 people, lift the upper assembly onto the riser assembly. Raise with hands placed near center/upper of color cubby, do not lift from the bottom of the cabinet, this poses a serious pinch hazard when lowering onto the riser assembly. Use the supplied connector bolts to secure through the riser platform into the predrilled holes in the cabinet.

### Quantity -

Finish Schedule - 946-60-1

Face Color -  
 Top Color -  
 Toe Color - Silver Steel  
 Reveal / Accent Color - N/A  
 Hardware - Amati Pulls  
 Interior - Black Melamine  
 Other (Specify) - Silver Steel

### General Notes:

1. All counter tops are to be made removable wherever possible.
2. Items must be broken into manageable sections For Shipping. Mark For Ease Of Reassembly.
3. Install Shipping Cleats Wherever Possible To Prevent Shipping Damage.
4. Purchased items Must Be Trial Fit Before Shipping.

|                   |                        |           |
|-------------------|------------------------|-----------|
| Title:            |                        |           |
| Size:<br>NTS      | Drawing Number:<br>Job | Drawn By: |
| Date:<br>01/28/08 | Sheet<br>8 of 10       |           |