



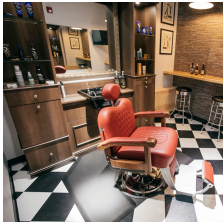
CAVALIER BARBER CHAIR

SKU:B20

The classic style of the Cavalier Barber Chair is accented by solid red carved oak arms and padded upholstered armrests. This barber chair has a metal footrest, reclining back and a padded calf pad, that allows your clients to be comfortable during the service.

TECHNICAL INFORMATION

- Width between the arms 22"
- Width outside the arms 27"
- Height to the top of the back 40"-44"
- Height to top of seat 24"
- Depth of seat 20"
- Overall depth 70"
- Reclining back
- In-sync kick-out footrest
- Roll-over calf-pad
- Adjustable/removable headrest
- All metal-to-metal construction w/ ball-bearings
- Heavy-duty hydraulic base w/ 27" silver power-coated 10 gage steel baseplate
- Fabricated steel frame
- zig-zag spring reinforced comfort cushions
- Real Red Oak arms w/ padded upholstered rests
- Quilted upholstery



SHIPPING INFORMATION

Item generally ships via Freight(Truck) service

- Weight: 180 lbs
- Dimensions: 48"L x 32"W x 46"H

WARRANTY

10 Years:

- B Series barber chair American made hydraulic pumps
- Gas cylinders in B chairs
- All mechanical components in B chairs

3 Years:

- Upholstery